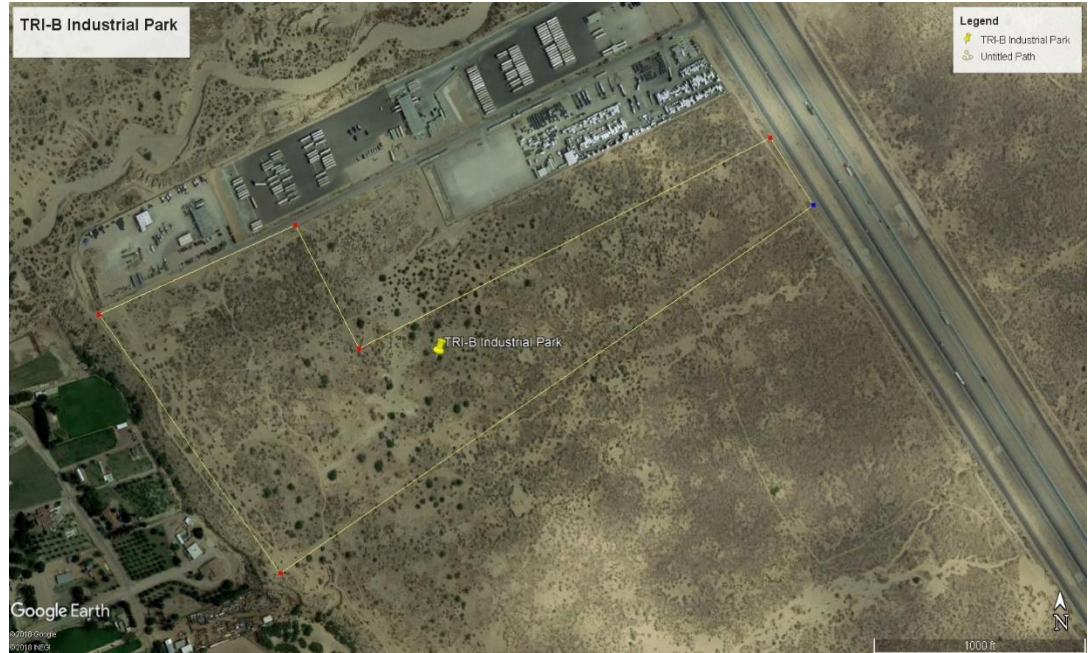


\$3,200,000

The TRI-B Industrial park was created as a multi-use commercial and industrial district in El Paso's Rapidly developing lower valley region. The park is zoned M-1 and is located within the city of Socorro, Texas. There is electricity, phone and water utilities to the property line.

For
SALE

TRI-B Industrial Park



The industrial park has frontage along interstate 10 east as well as along Steere Tank Road, which runs southward from the interstate. Companies located within the park include Cazaor Transportation, Werner Enterprises and the Lower Valley Water district.